

**RISK  
BEYOND  
2025**

**ERMA**  
INTERNATIONAL  
CONFERENCE  
ON ERM



**Risk Odyssey:**  
Engineering Momentum,  
Building a Resilient Risk DNA

# BEYOND TECHNOLOGY:

## Building Intelligent Risk Capabilities

**Ida Ceniza Tiongson**

Vice Chairperson – Institute of Corporate Directors  
(in charge also of Technology Governance)

Trustee – Fintech Alliance Ph

Board Director- several Publicly Listed Companies



Risk Beyond Is Hosted by  
ERMA - Enterprise Risk Management Academy  
[www.erm-academy.org](http://www.erm-academy.org)

 [riskbeyond.com](http://riskbeyond.com)





**Risk Odyssey:**  
Engineering Momentum,  
Building a Resilient Risk DNA



**IMELDA 'IDA' CENIZA TIONGSON**

**President of an ING formed company,  
Opal Portfolio Investments (SPV-AMC) Inc. involved in handling  
distressed assets and turning around businesses**

Present

- Board of Trustee/Vice Chair and Teaching Fellow : Institute of Corporate Directors
- Board of Trustee: Fintech Alliance Ph, Womenbiz Ph, Blockchain Council of the Philippines
- Lecturer at Ateneo CCE, Worldbank IFC, ICD
- Board Director: several Publicly Listed Companies

Past Experience

- BSP Open Finance Oversight Committee and Chair of Governance
- Senior Vice President - Philippine National Bank.
- Senior Corporate Banker - National Australia Bank (Australia)
- Past Board Directorships; include publicly listed Vitarich from 2005-2007, Board Excom member of publicly listed East Asia Power Corporation
- Lecturer – Ateneo Graduate School of Business
- Technical Working Group which drafted the combined Law on business rehabilitation and insolvency called The Financial Rehabilitation and Insolvency Act of 2010 and the Revised Corporation Code.



# Risk Odyssey: Engineering Momentum, Building a Resilient Risk DNA

Easier Marketing



Make an impressive marketing image with 3 people at the background needing sunscreen and having fun at the beach

Ask anything



Search



Deep research







## Risk Odyssey: Engineering Momentum, Building a Resilient Risk DNA

### Easier Marketing



Shield your glow  
with confidence







## Risk Odyssey:

Engineering Momentum,  
Building a Resilient Risk DNA

Easier Marketing





## Risk Odyssey:

Engineering Momentum,  
Building a Resilient Risk DNA







## Risk Odyssey: Engineering Momentum, Building a Resilient Risk DNA

Create a Clone, Translate





## Risk Odyssey: Engineering Momentum, Building a Resilient Risk DNA

Create a Clone, Translate



Ida Tiongson





## Risk Odyssey:

Engineering Momentum,  
Building a Resilient Risk DNA

Deep Fake



# Top AI Use Cases

Customer Experience



Supply chain



Human Resources



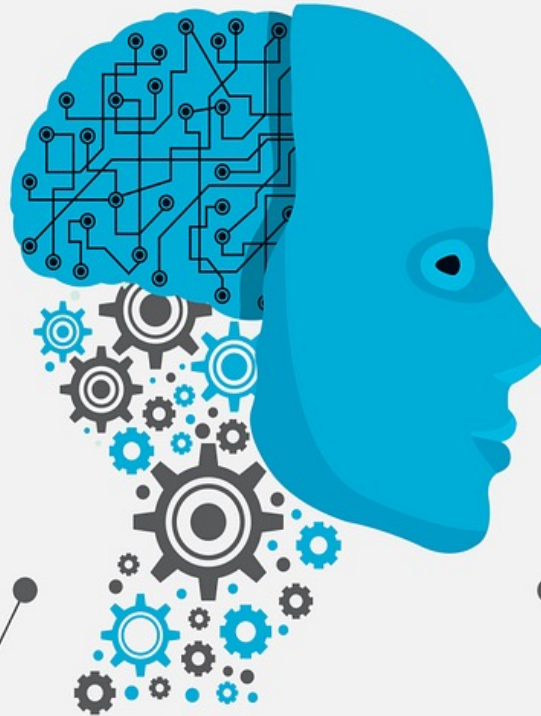
Fraud Detection



Knowledge Creation



Research & Development



Predictive Analytics



Real-time Operations Management



Customer Services



Risk Management & Analytics



Customer Insight



Pricing & Promotion





## Risk Odyssey:

Engineering Momentum,  
Building a Resilient Risk DNA



- ✓ We are Managing Risk In the Wrong Century
- ✓ What Risk Intelligence Really Means
- ✓ The New Frontier: Risk Intelligence
- ✓ The Dark Side: The Biggest Risks of Tech Adoption
- ✓ The Future Belongs to the Risk-Intelligent Organization





**Risk Odyssey:**  
Engineering Momentum,  
Building a Resilient Risk DNA

*"We Are Managing Risk in the Wrong Century."*

Most organizations today are using 20th-century tools to manage 21st-century threats. Data moves in milliseconds, but decisions still move in committees. Weak response time.

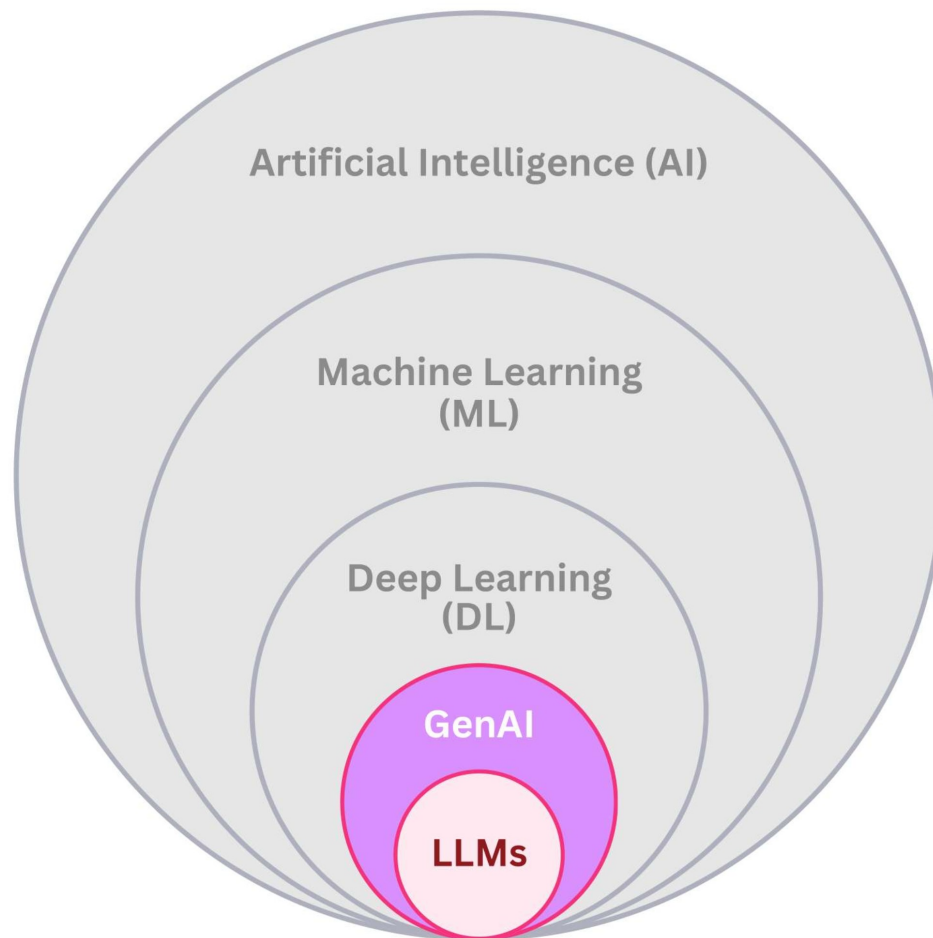
• *Why intelligent risk is the new strategic edge*





## Risk Odyssey:

Engineering Momentum,  
Building a Resilient Risk DNA



broad field of computer science focused on creating machines capable of performing tasks that typically require human intelligence

a subset of AI that involves the development of algorithms that can learn and make predictions or decisions based on data

a subset of ML that uses layered **neural networks** to analyze various factors of data; it is inspired by the structure and function of the brain

a type of AI that uses ML and DL methods to generate new content, from text to images and music, based on its training data

a subset of Gen AI that uses DL techniques to understand and generate human-like text





## Risk Odyssey: Engineering Momentum, Building a Resilient Risk DNA

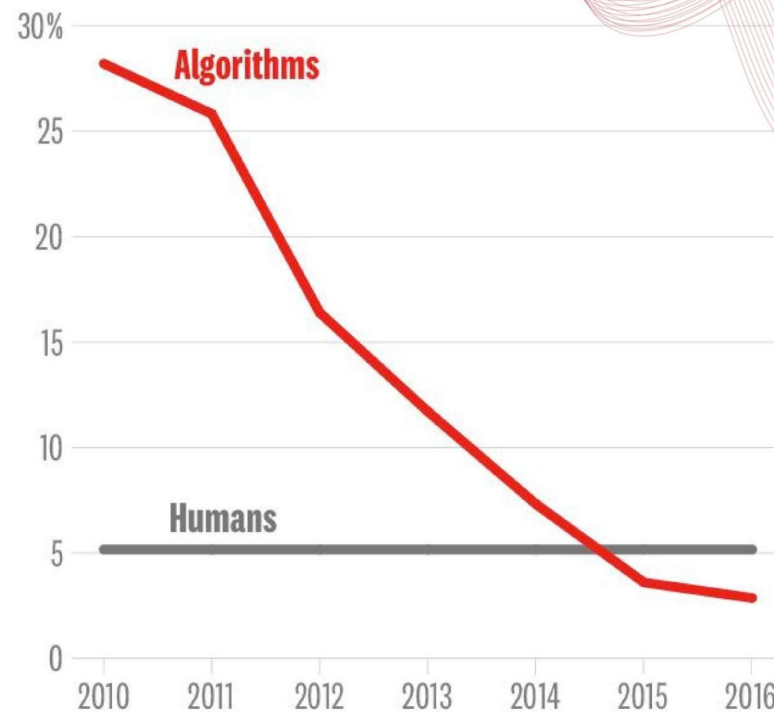
### Puppy or Muffin?



Source: Karen  
Zack/@teenybiscuit

The Business of AI by E Brynjolfsson and A McAfee, The Big Idea, HBR.

### VISION ERROR RATE



SOURCE ELECTRONIC FRONTIER FOUNDATION

© HBR.ORG





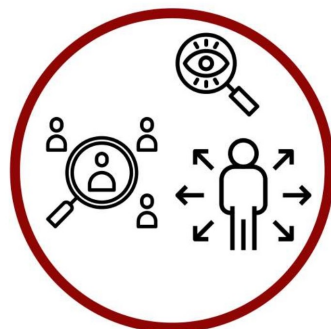
## Generative AI

*[oversimplifying, but more or less...]*

**DATA GATHERING  
(INPUT)**

**MODEL  
BUILDING**

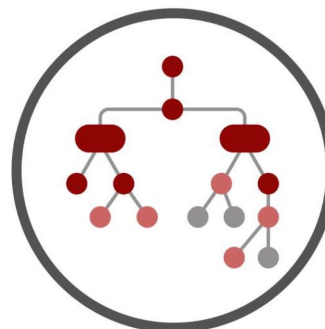
**OUTPUT**



Fed Information



Learn a Pattern



Reason, Analyze,  
Assess, Decide:  
Model



Perform Task:  
Predict, Classify,  
Recommend





**DATA GATHERING  
(INPUT)**

**MODEL  
BUILDING**

**OUTPUT**

# AI Agent

**Reasoning**

**Step 1  
Step 2  
Step 3**

**Acts (Open Source Tools)**



**Iteration**

**Hmm .. Lets try  
that again**

**DECISION**



**Risk Odyssey:**

Engineering Momentum,  
Building a Resilient Risk DNA

# What Risk Intelligence Really Means

Risk Management → Reacts

Risk Intelligence → Predicts

In the past, risk intelligence meant financial ratios and dashboards. Today, it means **permissioned intelligence**



**Risk Odyssey:**

Engineering Momentum,  
Building a Resilient Risk DNA

# The New Frontier: Risk Intelligence = Trust + Tech



Are we allowed to use this data?  
Do customers trust us?  
Are we using right data to make  
best decision?





**Risk Odyssey:**

Engineering Momentum,  
Building a Resilient Risk DNA

# The Dark Side: The Biggest Risks of Tech Adoption

## UTOPIAN

- Advanced Technology
- Social Equity
- Environmental Harmony
- Trust and Security
- Global Collaboration

## ◉ DYSTOPIAN

- Uncontrolled Technology
- Environmental Collapse
- Loss of Privacy
- Economic Inequality
- Breakdown of Trust



# The Dark Side: The Biggest Risks of Tech Adoption

1. **Model blind spots** — algorithms making confident mistakes.
2. **Data fragmentation** — massive insights trapped in silos.
3. **Cyberattacks** — the fastest-growing business risk globally.
4. **Ethical & regulatory landmines** — privacy, bias, explainability.
5. **People issues** — low adoption, override culture, ‘I don’t trust the model.’

*“The biggest risk today is leaders who trust the technology too much...and teams who don’t trust it at all.”*





## Risk Odyssey:

Engineering Momentum,  
Building a Resilient Risk DNA



**China Shuts Down AI Chatbots to Stop Cheating in College Exams**



**BREAKING News**

**"Australia set to Bans Social Media for Under-16s to Curb Harmful Algorithms, starting December 10."**



**READ CAPTION**

**DENMARK JUST ANNOUNCED A PLAN TO BAN KIDS UNDER 15 FROM USING SOCIAL MEDIA.**

LOVE & LIGHT LOGS

piZap.com









**Risk Odyssey:**  
Engineering Momentum,  
Building a Resilient Risk DNA

# **The Future Belongs to the Risk-Intelligent Organization**

What are the future predictions of top business leaders ?





**Risk Odyssey:**  
Engineering Momentum,  
Building a Resilient Risk DNA

## WORLD ECONOMIC FORUM – Visions (Predictions) for 2030

**Clean air is a human right** - — Jane Burston, Executive Director of the Clean Air Fund; Member of the Global Future Council on Energy

**We build a fair and democratic gig economy** - — Mark Graham, Professor of Internet Geography, University of Oxford, member of the Global Future Council on the New Education and Work Agenda

**There's a new platform for peace in the Middle East** - — Dalia Dassa Kaye, Director of the Center for Middle East Public Policy, RAND; Member of the Global Future Council on Geopolitics



**Risk Odyssey:**

Engineering Momentum,  
Building a Resilient Risk DNA

**We create cities where you can walk to everything you need -** — Rob Adams, Director City Design and Projects, City of Melbourne, member of the Global Future Council on Cities and Urbanization

**Clean electricity will dominate the energy sector -** Chen Wei Nee, Chief Strategic Officer, Sustainable Energy Development Authority, Malaysia; Member of the Global Future Council on Energy Technologies

**Virtual reality will protect our mental health -** — Professor Helen Christensen, director and chief scientist at Black Dog Institute, Australia; member of the Global Future Council on Media, Entertainment and Culture





**Risk Odyssey:**

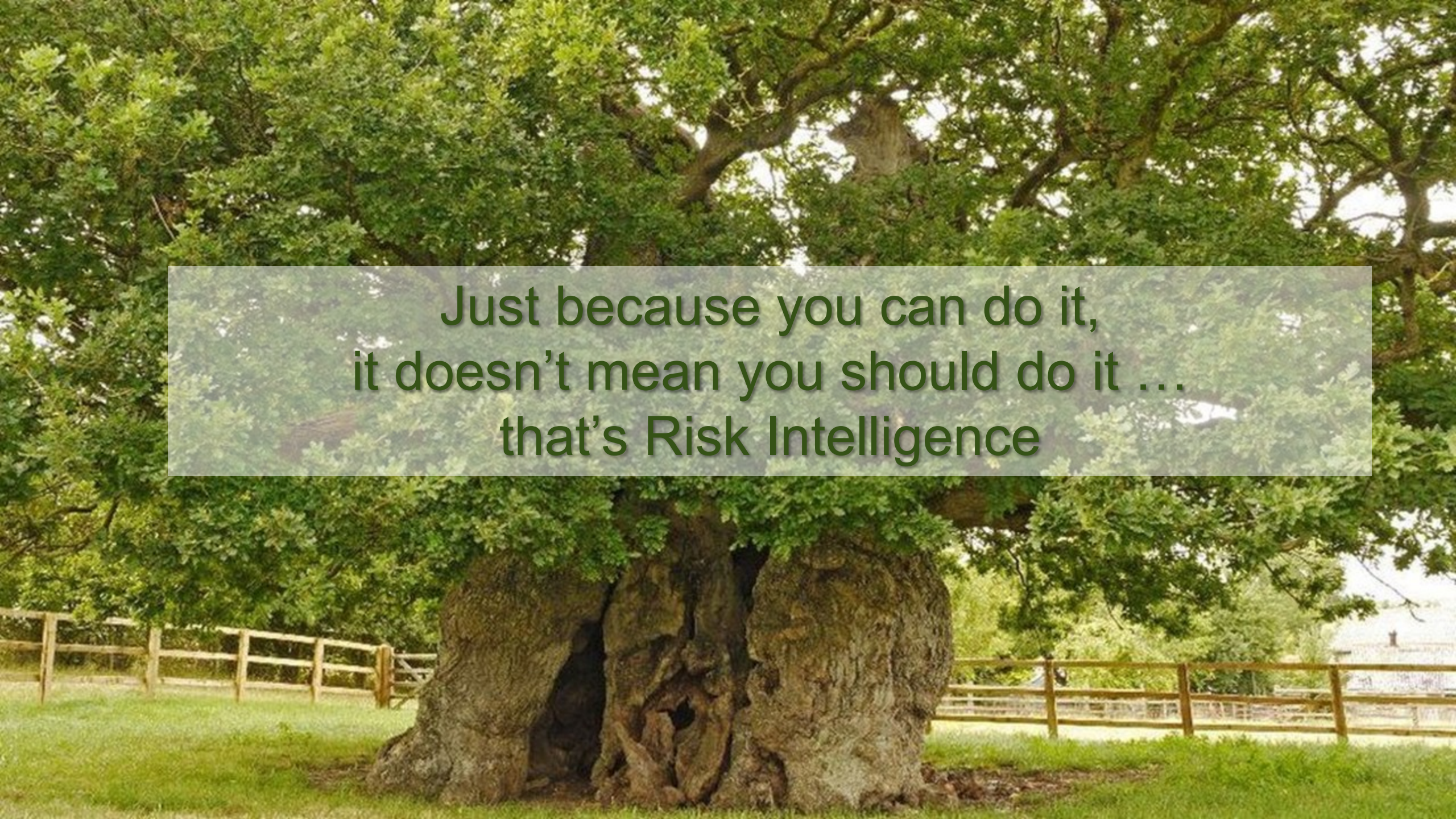
Engineering Momentum,  
Building a Resilient Risk DNA

**The circular economy has become the economy** — Leanne Kemp, founder and CEO, Everledger; member of the Global Future Council on Advanced Manufacturing and Production

**The middle class grows and inequality shrinks** - — Carl Frey, Director, Future of Work, Oxford Martin School, University of Oxford

**Streets are made for people not cars** - — Marcela Guerrero Casas, Founder and Associate, Open Streets Cape Town; Member of the Global Future Council on Mobility



A large, ancient tree with a hollowed-out trunk stands in a grassy field. The tree's canopy is dense with green leaves, and its trunk is thick and gnarled, with a large opening in the center. In the background, a wooden fence runs across the field, and a small building is visible in the distance. The scene is peaceful and rural.

Just because you can do it,  
it doesn't mean you should do it ...  
that's Risk Intelligence



RISK  
BEYOND  
2025

ERMA  
INTERNATIONAL  
CONFERENCE  
ON ERM



## Risk Odyssey:

Engineering Momentum,  
Building a Resilient Risk DNA

# Terimakasih



Risk Beyond Is Hosted by  
ERMA - Enterprise Risk Management Academy  
[www.erm-academy.org](http://www.erm-academy.org)

 [riskbeyond.com](http://riskbeyond.com)

